

**First Floor Flat, 93a, Copthorne Road, Copthorne, Shrewsbury, SY3 8ND**

**£600 Per Month**





First Floor Flat, 93a, Copthorne Road, Copthorne, Shrewsbury, SY3 8ND

**£600 Per Month**

VIRTUAL TOUR AVAILABLE: Spacious two bedroom first floor flat a short walk from Quarry Park and Shrewsbury Town centre in a popular residential area.

Available: 04/04/25

## Description

Comprising: Private entrance, stairs to first floor landing, living room, spacious kitchen, two double bedrooms, modern bathroom including shower. Night storage heating. Double glazing throughout. EPC D



Unfurnished

Council Tax Band: B

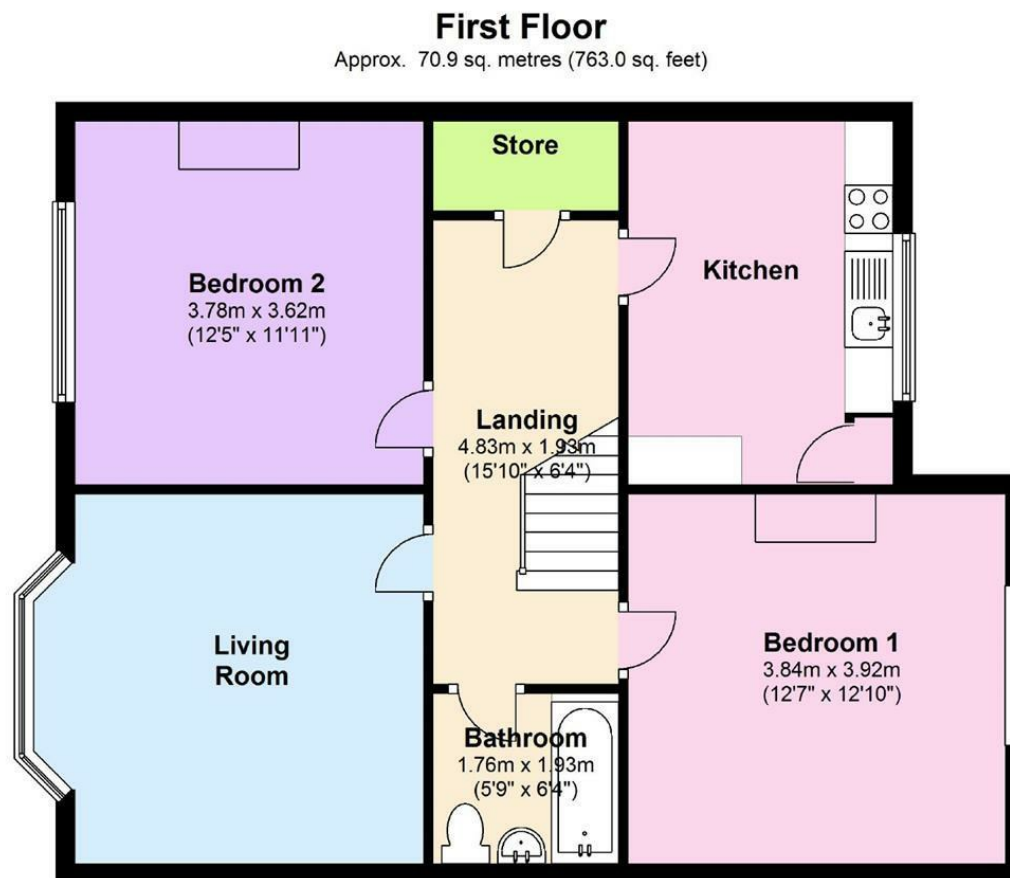
Available: 4th April 2025

EPC: D





## Floor Plans



Total area: approx. 70.9 sq. metres (763.0 sq. feet)

We accept no responsibility for any mistake or inaccuracy contained within the floorplan. The floorplan is provided as a guide only and should be taken as an illustration only. The measurements, contents and positioning are approximations only and provided as a guidance tool and not an exact replication of the property.

Plan produced using PlanUp.

These particulars, whilst believed to be accurate are set out as a general outline only for guidance and do not constitute any part of an offer or contract. Intending purchasers should not rely on them as statements of representation of fact, but must satisfy themselves by inspection or otherwise as to their accuracy. No person in this firm's employment has the authority to make or give any representation or warranty in respect of the property.